



**SUOMI
FINLAND**

RESEARCH AND INNOVATION POLICY OF FINLAND

EU Research & Innovation Day

October 4, 2016

Hanne Ristevirta, Embassy of Finland, Seoul



Ranking countries impact on global innovation

Ezell, S.; Nager, A. and
Atkinson, R.D.:
Contributors and
Detractors: Ranking
Countries' Impact on
Global Innovation (ITIF:
Information Technology
and Innovation
Foundation). 2016

Rank	Country	Type	Final Score	Contributions Score	Detractions Score
1	Finland	Schumpeterian	15.6	14.1	13.9
2	Sweden	Schumpeterian	14.2	13.9	11.1
3	United Kingdom	Schumpeterian	13.7	13.7	10.4
4	Singapore	Advanced Asian Tiger	12.3	15.0	5.9
5	Netherlands	Schumpeterian	12.1	9.6	12.4
6	Denmark	Schumpeterian	11.6	13.5	6.2
7	Belgium	EU Continentalist	11.4	9.4	11.3
8	Ireland	EU Continentalist	10.9	8.7	11.2
9	Austria	EU Continentalist	10.5	9.2	9.7
10	United States	Adam Smithian	10.5	8.5	10.4
11	France	EU Continentalist	10.2	10.2	7.8
12	Germany	EU Continentalist	9.4	7.0	10.3
13	Norway	EU Continentalist	9.4	7.8	9.2
14	Japan	Advanced Asian Tiger	9.2	11.3	4.3
15	Taiwan	Advanced Asian Tiger	9.2	12.3	3.1
16	Slovenia	EU Up and Comer	9.0	9.2	6.5
17	Portugal	EU Continentalist	8.8	7.5	8.4
18	Estonia	EU Up and Comer	7.3	4.3	9.5
19	Iceland	EU Continentalist	7.1	9.0	3.0
20	Switzerland	EU Continentalist	6.8	8.8	2.5
21	Korea	Advanced Asian Tiger	5.9	14.7	-6.9
22	Australia	Adam Smithian	5.9	4.7	6.0
23	Israel	Advanced Asian Tiger	5.1	8.2	-0.2
24	Spain	EU Continentalist	5.0	3.1	6.3
25	Canada	Adam Smithian	5.0	8.3	-0.5
26	Czech Republic	EU Up and Comer	4.5	2.1	6.5
27	Hungary	EU Up and Comer	4.4	2.9	5.3
28	New Zealand	Adam Smithian	2.9	-1.4	7.9
29	Hong Kong	Advanced Asian Tiger	1.4	-1.8	5.4



Finnish Government's Focus Areas in R&I Policy: "*Finland of Solutions*"

SUOMI
FINLAND

- The needs of **start-ups** and rapidly growing companies
- **Further digitalization** and use of new technologies and experimental innovation in enterprises
- Bio economy, cleantech and **healthcare technologies**
- Commercialization of research results



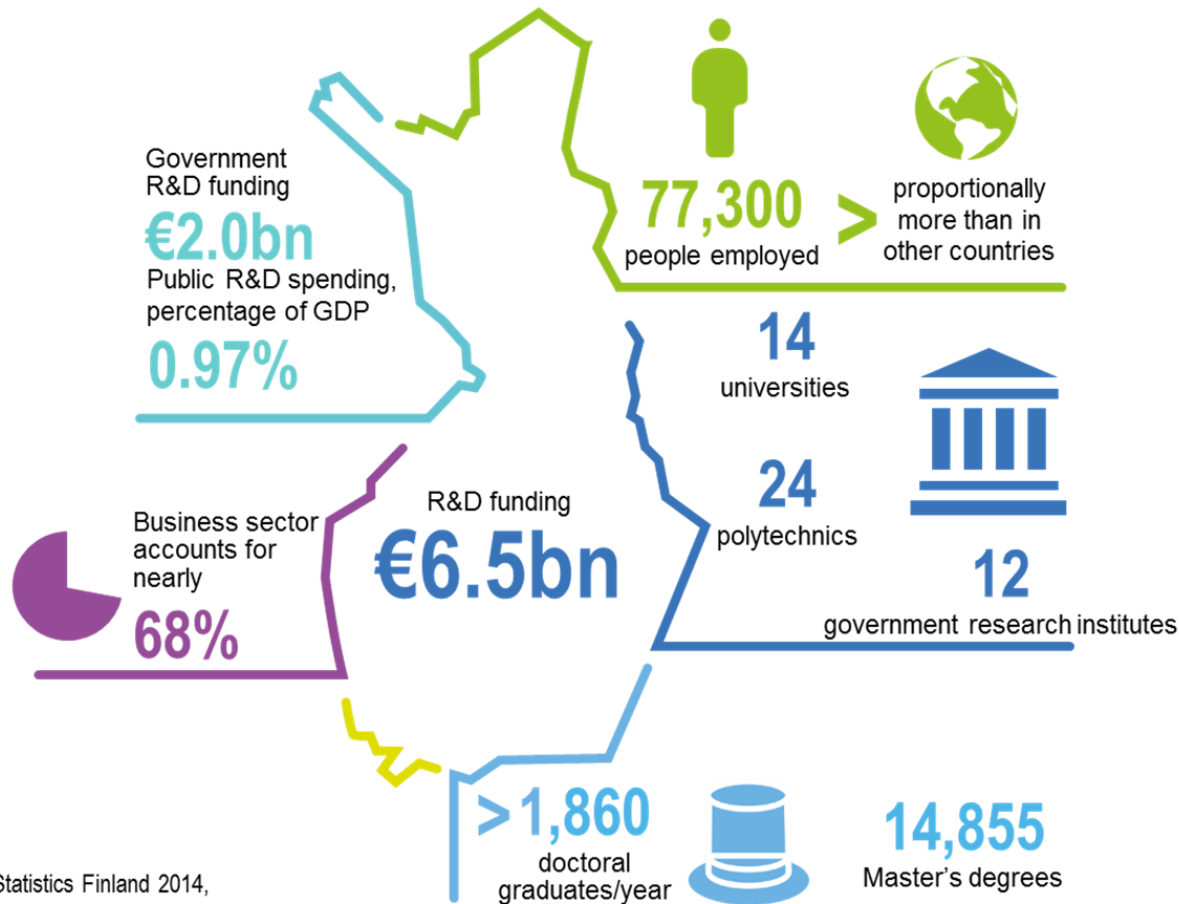
- **Open data, science and innovation:** creating right ecosystems, increasing investment and bringing more companies to knowledge economy
- **Digital economy** - Finland wants to be one of the leading environments for developing, testing and using ICT
- Finland is a forerunner in developing and implementing **new 5G technologies**



Finland is committed to develop open science and open access

SUOMI
FINLAND

- National activities to promote open science are vital
- The key objective is to publish as openly as possible research results, research data and the methods used
- This is facilitated by clear policies and best practices, and by providing the necessary services
- <http://openscience.fi/>



Source: Statistics Finland 2014,
[Vipunen Education Statistics Finland](#)



Research funding opportunities

SUOMI
FINLAND

1. Academy of Finland

<http://www.aka.fi/en/funding>

- individual post-doc researchers and groups

2. Tekes

http://www.tekes.fi/en/funding/research_organisations

- high-quality research associated with a vision of possible applications in business or society

3. CIMO – Organization for international mobility co-operation

- scholarships to foreign students for Doctoral studies at Finnish universities



Starting point for cooperation between Korea and Finland

SUOMI
FINLAND

Korea

- Fast developing country
- Large chaebols
- SMEs not strongly recognized
- Large investments of GDP to R&D



Finland

- Fast-growing start-up and SME industry
- Very informal business culture
- Large investments of GDP to R&D





Steps for cooperation

SUOMI
FINLAND

1. Academic collaboration with university

- research exchange and publications

2. Research institutes

- Research exchange, pilot and industrial collaboration

3. Cooperation with industry

- Joint product development, commercialization



R&I cooperation between Korea and Finland - successful stories



Technical Research Center of Finland (VTT) & Konkuk University

SUOMI
FINLAND



- Collaboration started in 2008
- Joint projects with bilateral research exchange
- Laboratory with jointly invested devices
- Platform for Korean and Finnish companies



Joint Research Laboratory with Electronics and Telecommunication Research Institute ETRI and Technical Research Center of Finland

SUOMI
FINLAND



- Established in 2009
- Joint projects with bilateral research exchange on smart home applications
- Implementation of results for Korean and Finnish companies



Industrial Collaboration

SUOMI
FINLAND

- Joint technology development
- Technology commercialization
- Distribution and marketing





Design Factory Korea

SUOMI
FINLAND



Photo by Design Factory Korea

- educational platform at the Yonsei University
- part of the Design Factory Global Network (DFGN): an innovative and interdisciplinary network
- concept originates from Aalto University in Finland
- 6 countries (Finland, Australia, Switzerland, Chile, China and Korea)



November 30 – December 1, 2016 in Helsinki

Credit: Team Finland, Prime Minister's office¹⁵



SUOMI
FINLAND

Thank you!

hanne.ristevirta@formin.fi