



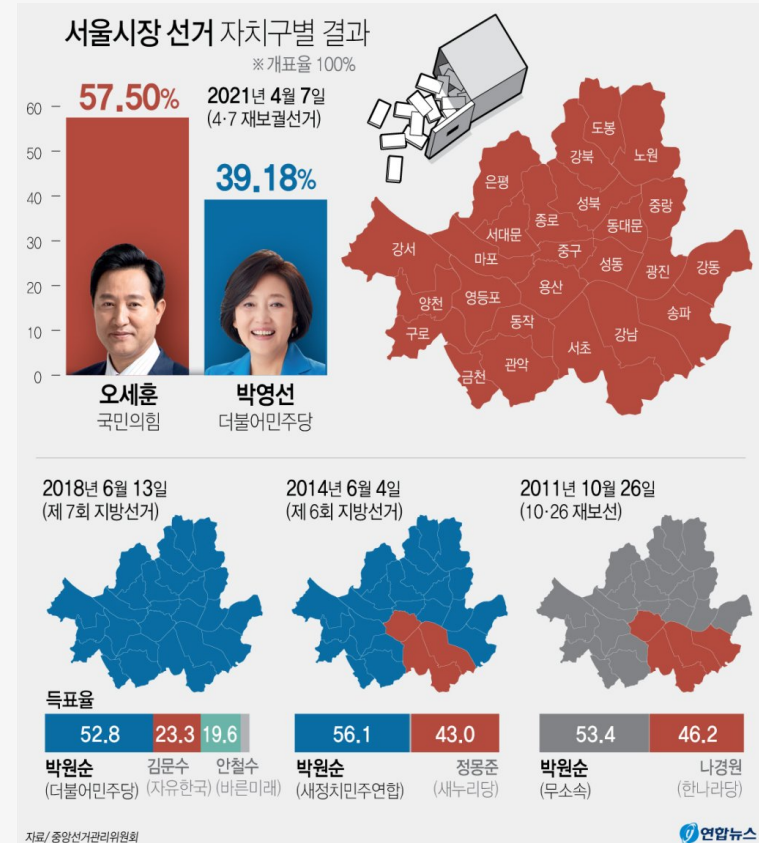
GR Korea – ECCK mayoral election webinar

2021 Seoul Mayoral Bi-Election & Prospects for 2022 Presidential Election
13 April 2021

Election Results

- High turnout as bi-election: 58.2% (2018: 59.9%)
- Park Youngsun of Minju Party received 39.2% of votes and Oh Sehun of People's Power Party received 57.5% of votes.
- In all municipalities of Seoul favored Oh Sehun. It was just the opposite in 2018 local election.

➤ What does this all mean?

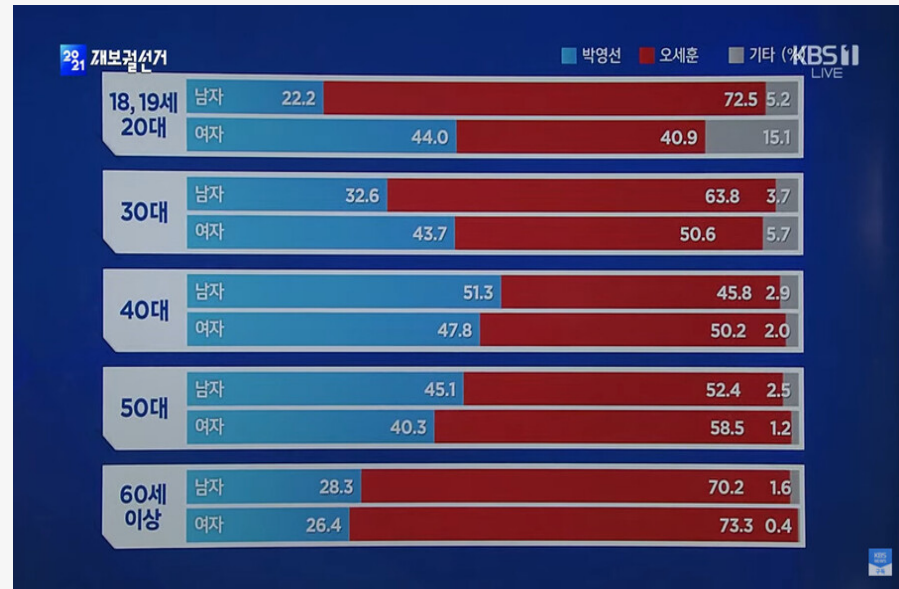


What Happened?

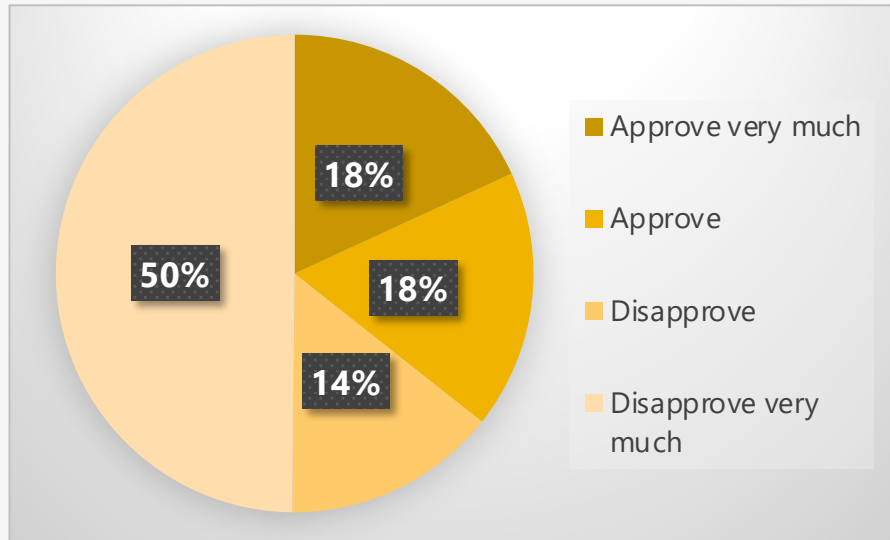
- Unifying the candidate of opposition sides.
- Accumulated fatigues from the Moon government's policy failure (housing price), scandals and COVID-19.
- Strong turnout in affluent and wealthy municipalities such as Seocho, Gangnam, Songpa.

What Happened to the “young male” voters?

- Young male voters becoming conservative?
- This segment of population is security conservative, but fiscal and social progressive.
- The sentiment of reverse-discrimination is prevalent among them.
- Their voting behavior will continue in the next presidential election.



President Moon's Approval Ratings



- Almost half of respondents are not just “unhappy” with Pres. Moon. They are “**very unhappy**.”
 - Sufficient reason to go to voting booth.
 - After the bi-election loss, Moon’s lameduck officially will begin just as former president Park did.
 - What happens to the Minju Party?

Party Affiliation by Regions

| | Minju | People's Power | JP | People's Party | Open Minju |
|-------------|-------------|----------------|-----|----------------|------------|
| Total | 30.4 | 39.4 | 3.3 | 8.5 | 4.8 |
| Seoul | 30.7 | 41.0 | 2.5 | 8.9 | 5.0 |
| Geonggi | 31.5 | 38.8 | 3.9 | 6.7 | 4.4 |
| Choongchung | 30.1 | 38.1 | 2.9 | 7.1 | 5.1 |
| Kangwon | 21.9 | 44.5 | 7.5 | 13.0 | 4.1 |
| PK | 28.2 | 43.0 | 2.6 | 11.2 | 3.1 |
| TK | 14.0 | 56.7 | 3.6 | 8.4 | 2.4 |
| Honam | 48.5 | 17.3 | 3.0 | 5.0 | 9.5 |
| Jeju | 34.1 | 28.1 | 6.1 | 1.9 | 13.2 |

Source: Realmeter (Apr. 5-9)

Party Affiliation by Regions

| | Minju | People's Power | JP | People's Party | Open Minju |
|-------|-------------|----------------|-----|----------------|------------|
| Total | 30.4 | 39.4 | 3.3 | 8.5 | 4.8 |
| 20s | 21.3 | 37.1 | 3.8 | 8.5 | 3.9 |
| 30s | 33.7 | 40.4 | 3.2 | 4.2 | 5.8 |
| 40s | 44.8 | 28.6 | 3.7 | 7.3 | 3.3 |
| 50s | 33.2 | 41.6 | 3.5 | 6.7 | 6.7 |
| 60s | 19.2 | 48.0 | 2.9 | 9.6 | 4.5 |
| 70s | 27.0 | 43.4 | 2.7 | 12.6 | 4.7 |

Prospects of 2022 Presidential Election

- For the next three months, there will be the most significant political events.
- Three most probable contenders and one very important key man.
- Still, it is going to be different – turnout will be much higher, votes from nationwide (Kyonggi is the largest area that is slightly friendlier than Seoul to the ruling party and Mr. Lee. Mr. Lee is the governor of the province).
- **VACCINE rollout will be playing an important role.**



Thank You.

Contact

GR Korea (Seoul)

20F 83 Uisadang-daero
Yeongdeungpo-gu, Seoul
11 07325

www.gr-korea.net

Tel +82 2 556 4205
info@gr-group.com

Other offices**GR Group Asia (Washington DC)**

1440 G Street NW
Washington D.C. 20005, USA

GR Group (London)

Pavilion, 96 Kensington High Street,
London W14 4SG, UK

GR Japan (Tokyo)

101 Juzen Bldg, 2-9-6 Nagatacho,
Chiyoda-ku, Tokyo 100-0014, Japan

GR Japan (Osaka) Level 18, Hilton
Plaza West Office Tower 2-2-2 Umeda
Kita-ku, Osaka 530- 0001 Japan